



Mickleover Primary School – Science Knowledge Organiser

Title: Teeth and Digestion

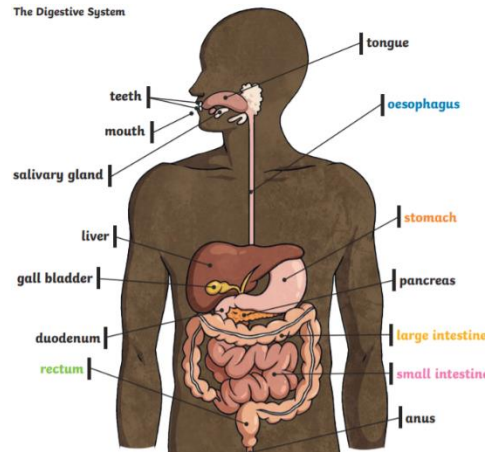
Year Group: 4

Term: Autumn 1

Vocabulary you will know...

Incisors	A type of tooth for slicing.
Canine	A type of tooth for tearing and cutting.
Premolar	A type of tooth that holds and crushes food.
Molar	A type of tooth for crushing, chewing and grinding.
Decay	When something begins to rot away.

The Digestive System



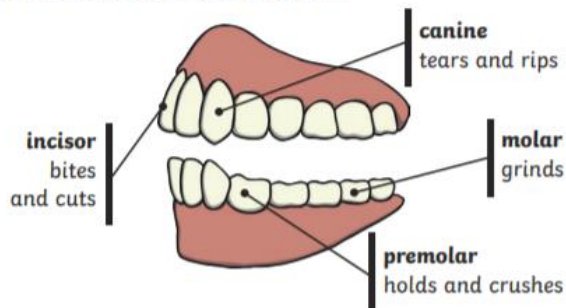
Key Learning

- ✓ Identify the different types of teeth in humans and their simple functions.
- ✓ Set up simple, fair practical enquiry that investigate a question.
- ✓ Record findings using scientific language, diagrams and tables.
- ✓ To be able to explain and form conclusions.
- ✓ Describe the simple functions of the basic parts of the digestive system in humans.

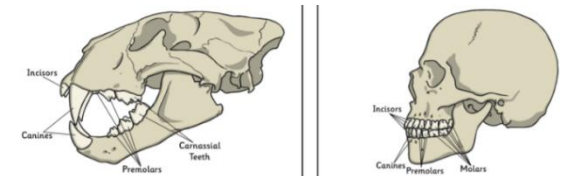
Vocabulary you will know...

Digestion System	The system our body has for turning food into energy.
Oesophagus	A muscular tube which moves food from the mouth to the stomach.
Stomach	An organ where food is broken down.
Small intestine	Part of the intestine where nutrients are absorbed into the body.
Large intestine	Part of the intestine where water is absorbed from remaining food waste.
Anus	Where food waste leaves the body.

Human Teeth and Their Functions



What similarities are there between human teeth and animal teeth?



MOTIVATED

PROUD

SUCCESSFUL